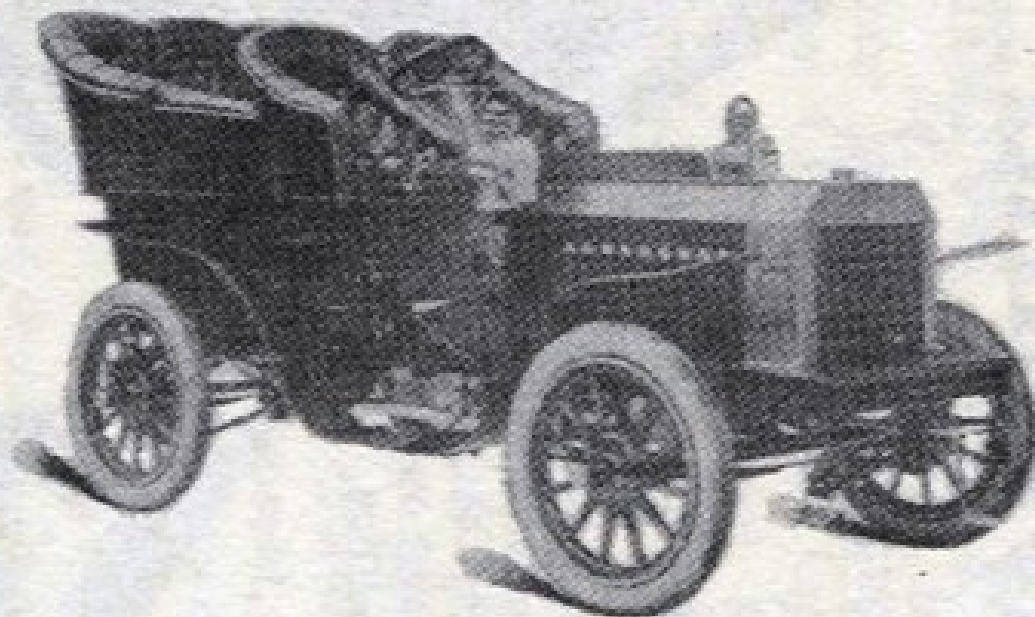


ACME TOURING CAR

1904

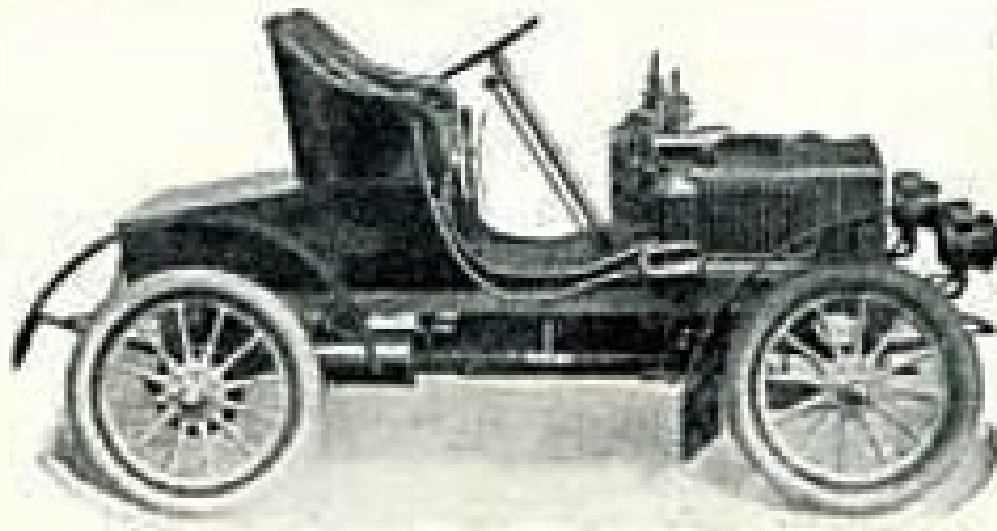


DRIVEN BY A POWERFUL BUT FLEXIBLE MOTOR WITH A BALL BEARING TRANSMISSION HAVING LARGE BEARING SURFACES AND A MINIMUM AMOUNT OF FRICTION. DOUBLE ACTING BRAKES. 16 H.P.

STRONG ON HILLS
SPEEDY ON THE LEVEL

Price \$1650

ACME MOTOR CAR CO.
READING, PENNA.



**These
are
the
reasons
of
our
success**

**Simplicity of operation
Elegance of appointment
and design
Highest degree of work-
manship
Great power in proportion
to weight
Correct engineering prac-
tice throughout**

**Type X, complete equipment, \$1000.
16 H. P. 3-speed transmission.**

**Type VIII, complete, with top and head-
lights, \$2750. 30 H. P. 4-speed
transmission.**

Acme Motor Car Co.
READING, PA.

To try an Acme is to buy an Acme

Acme Motor Cars

prove on actual, practical road demonstration every essential feature of advanced and perfected automobile engineering to-day:

The Acme claims of superiority are based on these cardinal points:

Highest Efficiency

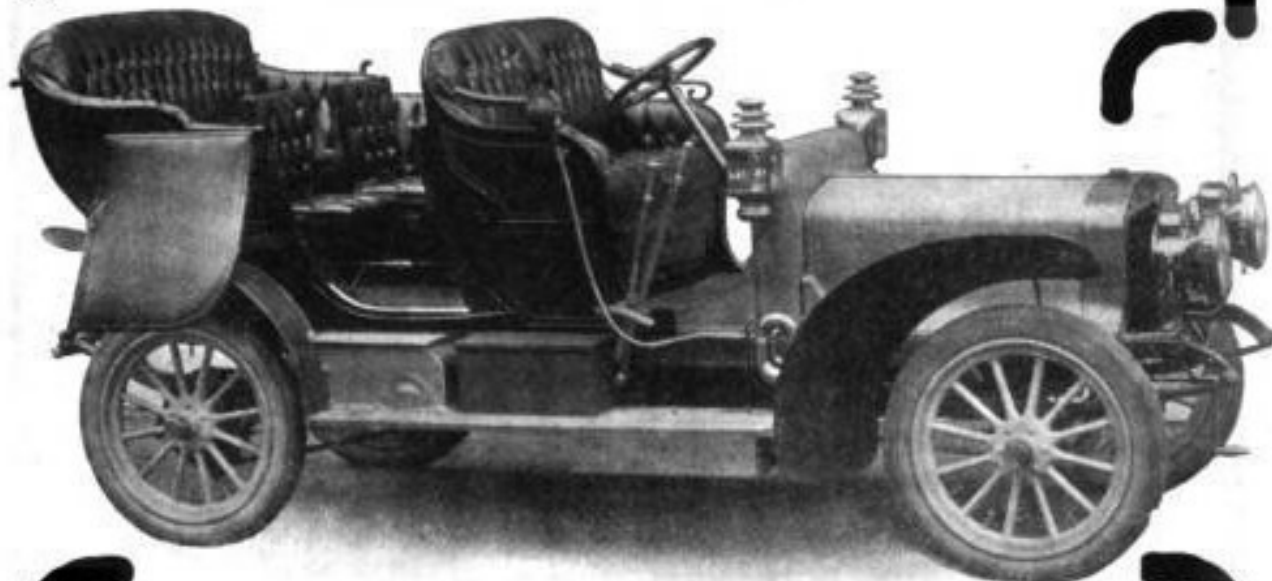
Ease of Control

Smooth, Quiet Running

Highest Power in Proportion to Weight

Strength and Compactness

Beauty of Design



Guaranteed for 365 Days

Acme Motor Cars are built entirely and wholly by the Acme Motor Car Company, which means there are no bought parts for assembling—no unknown quantities.

1906 ACME CARS

SPECIFICATIONS - - TYPE XV

Price	\$3500. Complete with two side Oil Lights, two Acetylene Head Lights and Generator, Tail Light and Horn.	Axles	Front Nickel Steel, drop forged, "I" Beam Spring Seats Integral with Axle; rear 1½ in. square, Nickel Steel forged.
Type	Touring Car.	Clutch	Multiple Disc, running in oil, self-contained, no end thrust on bearings.
Seating Capacity	7 persons.	Transmission	Practically indestructible, Selective Sliding Gear, direct drive on 2nd speed.
Weight	2000 lbs.	Speeds	4 speeds forward and one reverse on one lever.
Wheel Base	51½ inches.	Gears	Chrome Nickel Steel, oil tempered, 212,000 lbs. tensile strength.
Tread	54 inches.	Bearings	Annular Ball, full type non-adjusting, Lemoine pattern.
Clearance	10 inches.	Sprag	Internal Ratchet in Sprocket of each Wheel.
Body	Double Side Entrance Tonneau, divided Front Seats, made of best seasoned Ash, Poplar and Basswood.	Bolts and Nuts	All Bolts and Nuts throughout car, case hardened, and locked with Spring Lock Washers and Cotter Pins.
Seats	Soft Edged, Spring Cushioned Seats and Backs width, front, 19 in., depth, 18 in., width, rear, 22 in., depth, 18 in.	Gearing	Speed of Engine, 1000 R. P. M. 20-32 T. Sprockets.
Leather	Best Quality, Hand Buffed, Pebble Grained, French Finished.		
Frame	Cold Rolled Nickel Steel, 140,000 lbs. tensile strength.		

TYPE XIV - - \$2750

Of the same practical construction as type XV. Greatly improved in arrangement and larger body than last year.

Speed	Gear Ratio	Miles per hour
2nd DIRECT DRIVE	2.88	35.1
2nd	3.23	19.4
1st	9.90	14.1
Reverse	12.64	8.0

DEMONSTRATION OF TYPE XV OR TYPE XIV BY APPOINTMENT

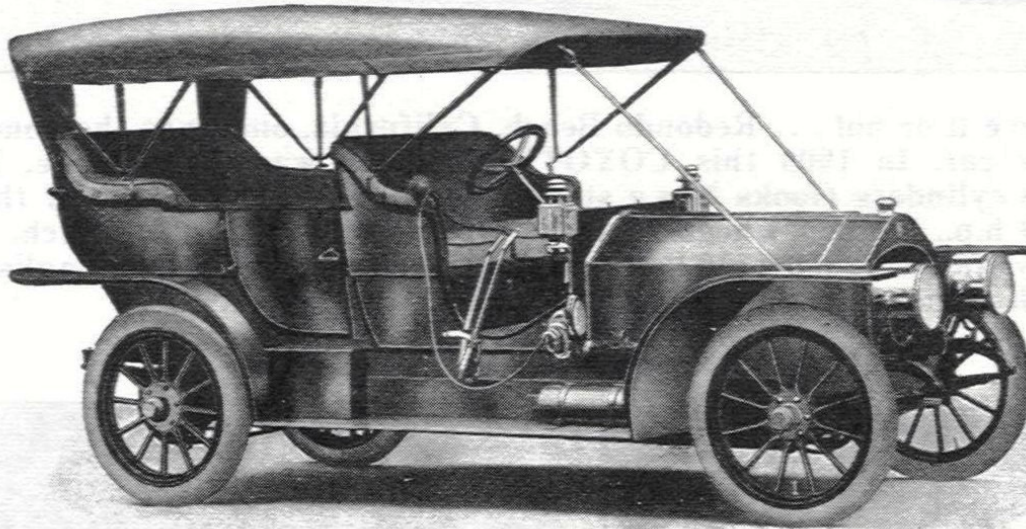
ACME MOTOR CAR CO. - Reading, Pa.

PHILADELPHIA BRANCH, 1385 ARCH STREET

The Acme
 "JUSTIFIES ITS NAME"

1909

A Real Motor Car for discriminating automobilists. Every car made by this Company is still running in the hands of its owners.



THREE LEADING TYPES

<p>The Acme "Sextuplet" (Type XX) Six Cylinders, 4$\frac{5}{8}$ in. x 5 in. 5 or 7 seats. \$4500</p>	<p>The Fairmount "Sextuplet" (Type XXI) Six Cylinders, 4$\frac{5}{8}$ in. x 5 in. Roadster or Tourabout. \$4500</p>	<p>The Standard "Quad" (Type XXVII) Four Cylinders, 5 in. x 5 in. 5 or 7 seats. \$3750</p>
---	--	--

Sold with a Perpetual Guarantee by

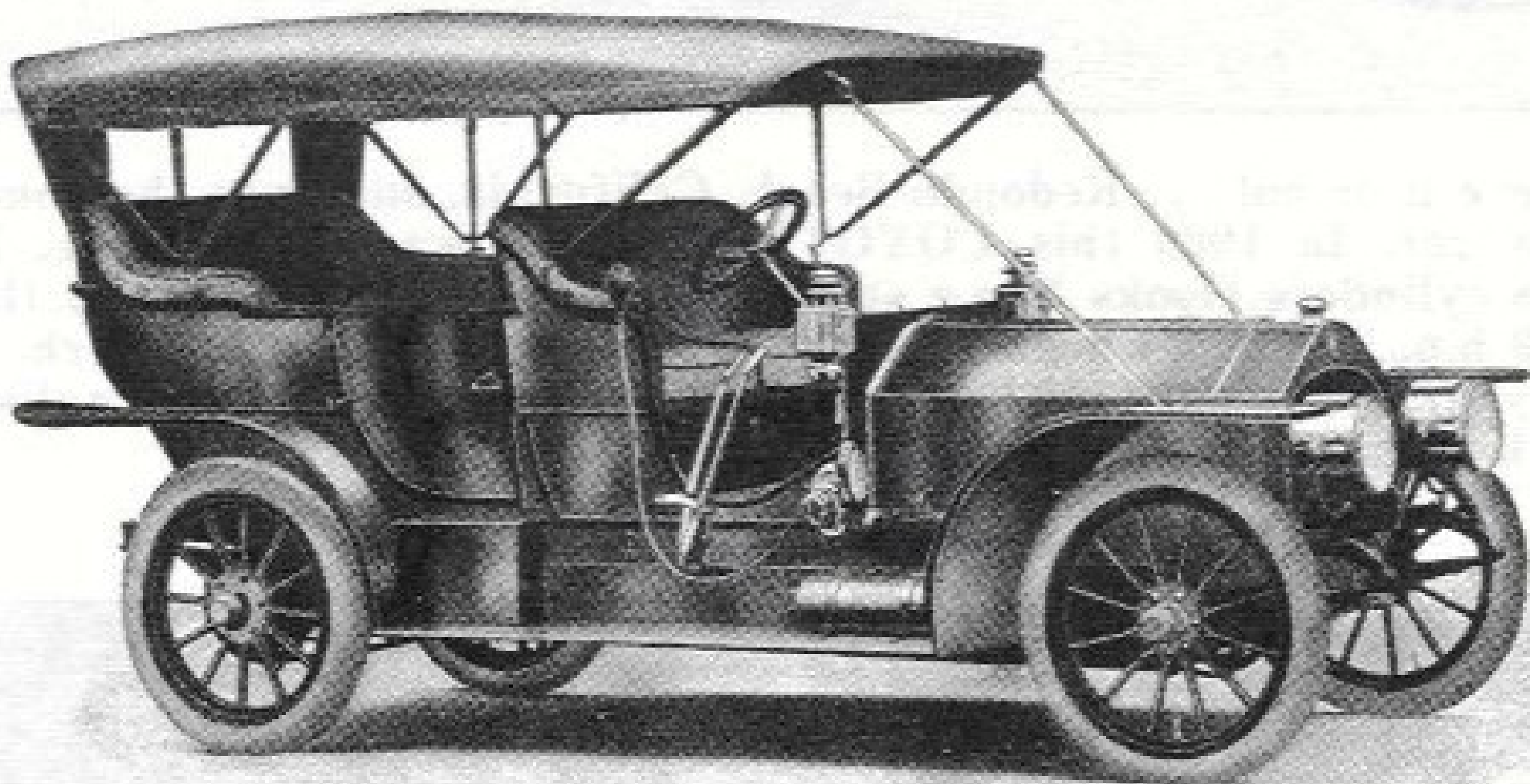
THE ACME MOTOR CAR COMPANY
 READING, PA.

AND BY

Boston Motor Co., 43 Columbus Ave., Boston, Mass.
 Corder & Flinn, 76th St. and Broadway, New York City.
 J. W. Mears, 9 Ocean Parkway, Brooklyn, N. Y.
 Theobald Motor Car Co., 608 N. Broad St., Philadelphia, Pa.
 C. B. Richards, 331 Collins Ave., Pittsburg, Pa.

Middleton Motor Car Co., Golden Gate Ave., San Francisco, Cal.
 Graham Automobile Co., 14 W. Bryan St., Savannah, Ga.
 Charles H. Thomas, Franklin, Pa.
 Ellerd Bros., Plainview, Texas.
 Toyah Valley Land Co., Pecos, Texas.

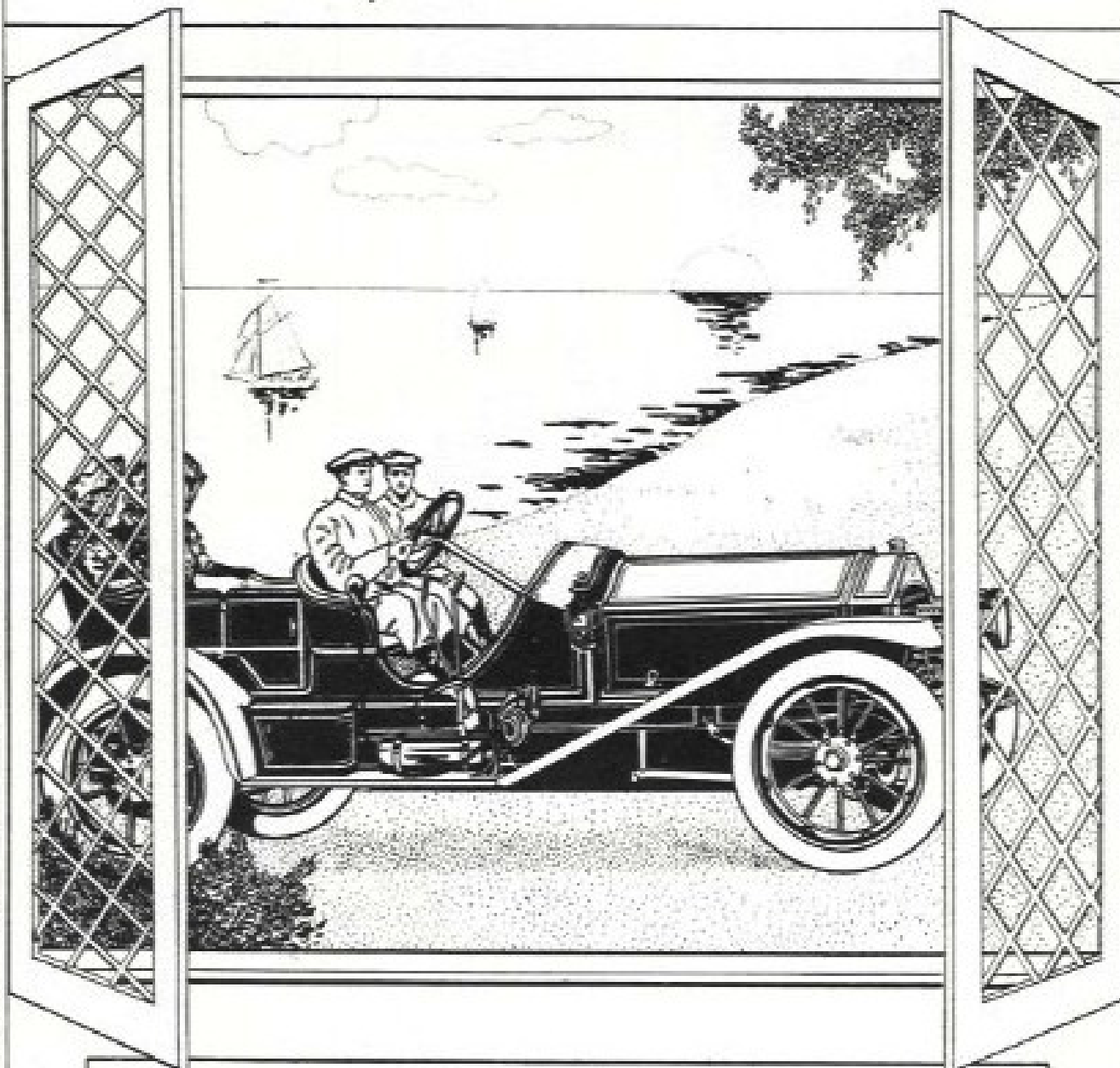
At the Grand Central Palace Show, New York, and at Boston, Philadelphia and other local shows



1910

The Acme

JUSTIFIES ITS NAME



SPECIAL SEXTUPLET

6-Cylinder. 50 H. P. \$4,750

Every car of hundreds built by

THE ACME MOTOR CAR COMPANY

since its start, seven years ago, is still running in the hands of its purchaser. That is one reason why it is called

"THE ETERNAL ACME"

THE ACME MOTOR CAR CO.

Reading, Pa.

